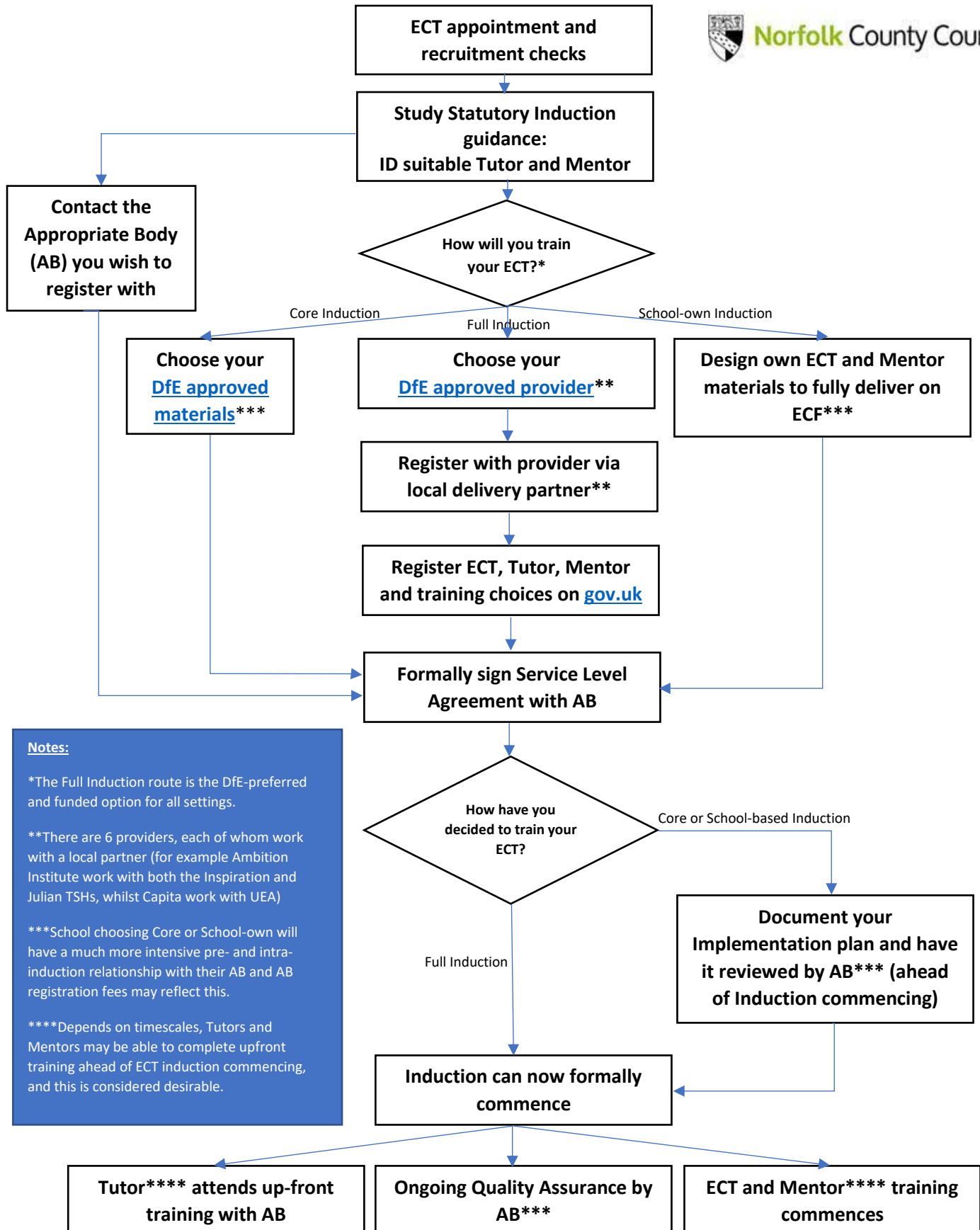


# Steps to take on appointing an Early Career Teacher



**Notes:**

- \*The Full Induction route is the DfE-preferred and funded option for all settings.
- \*\*There are 6 providers, each of whom work with a local partner (for example Ambition Institute work with both the Inspiration and Julian TSHs, whilst Capita work with UEA)
- \*\*\*School choosing Core or School-own will have a much more intensive pre- and intra-induction relationship with their AB and AB registration fees may reflect this.
- \*\*\*\*Depends on timescales, Tutors and Mentors may be able to complete upfront training ahead of ECT induction commencing, and this is considered desirable.